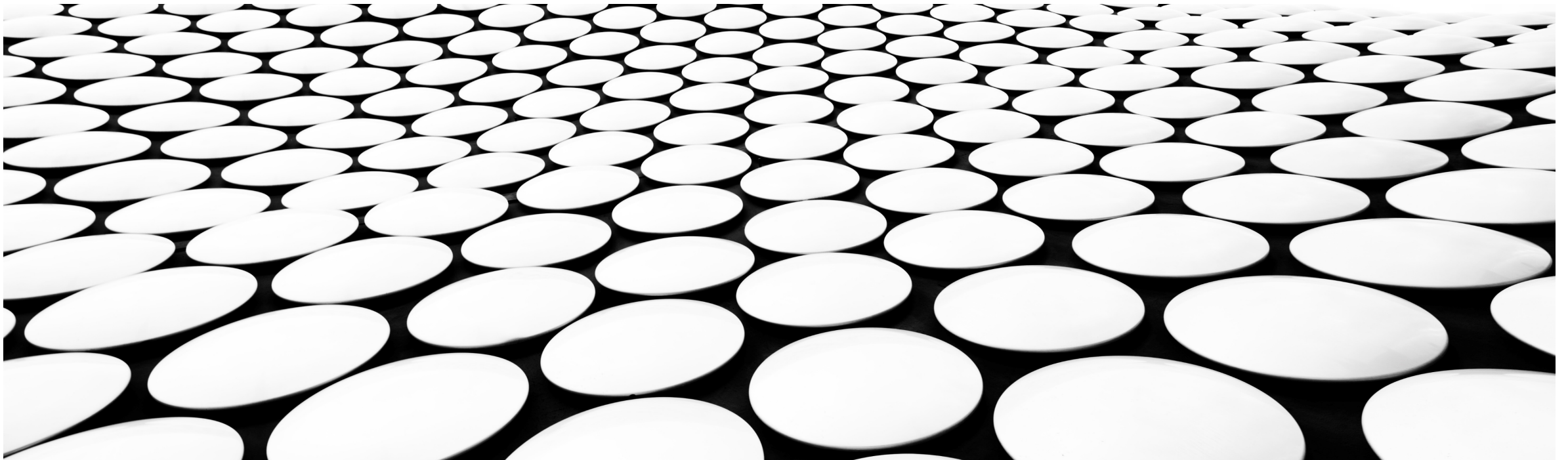

TROUBLE SHOOTING TECH AT HOME

QUICK FIXES TO BIG PROBLEMS

NOTICE: THE FOLLOWING PRESENTATION CONTAINS COPYRIGHTED MATERIALS USED UNDER THE MULTIMEDIA GUIDELINES AND FAIR USE EXEMPTIONS OF U.S. COPYRIGHT LAW. FURTHER USE IS PROHIBITED.



CLICK ON THE PROBLEM YOU ARE HAVING

Forgot my
Password/Need to
Change my
Password

OneNote Not
Syncing

Teams Issue

Internet not
connecting/Unable
to see websites

No sound when
Recording

Skyward

FORGOT MY PASSWORD/ REST ON NEXT PAGE

Forgot your password?
Email Mrs. Haggerty or
call FT Access to have it
reset.

Family Technology
Access
ftaccess@lwsd.org ,
425-9361322 Open
7am-7pm, 7days a
week.

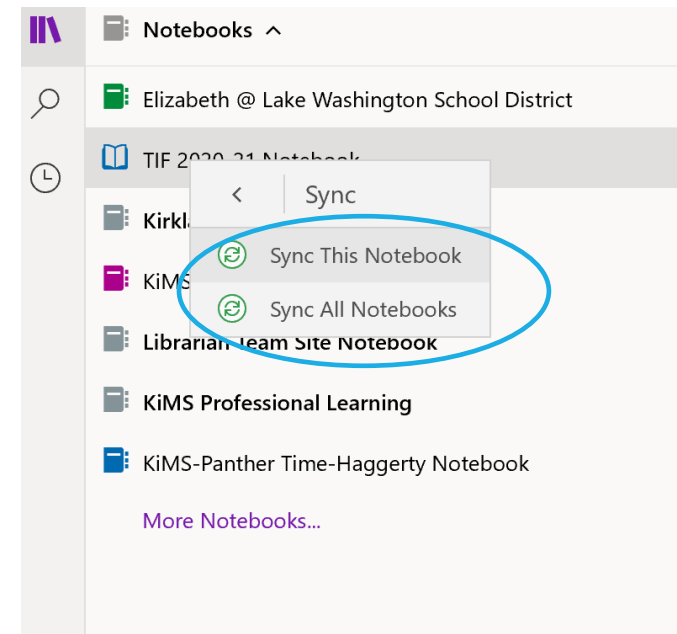
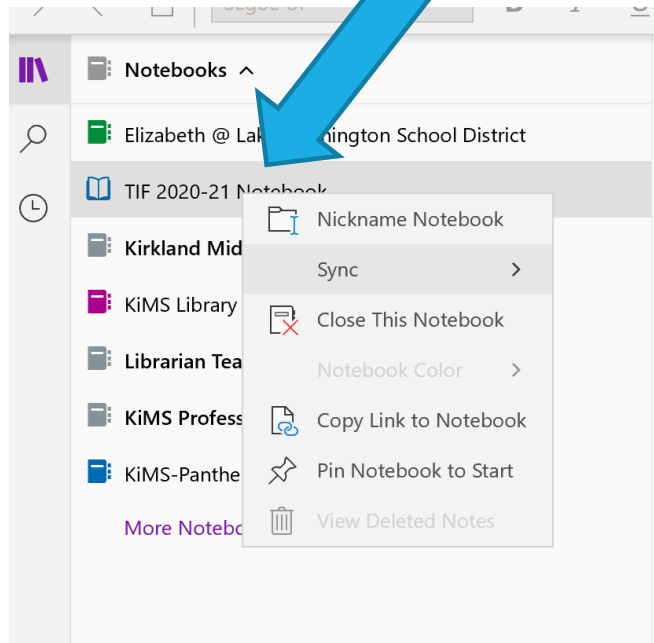
**ALREADY
REGISTERED
YOUR
USERNAME**

GO TO

[HTTPS://WWW.LWSD
.ORG/HELP/PASSWO
RD-REGISTRATION-
AND-RECOVERY](https://www.lwsd.org/help/password-registration-and-recovery)

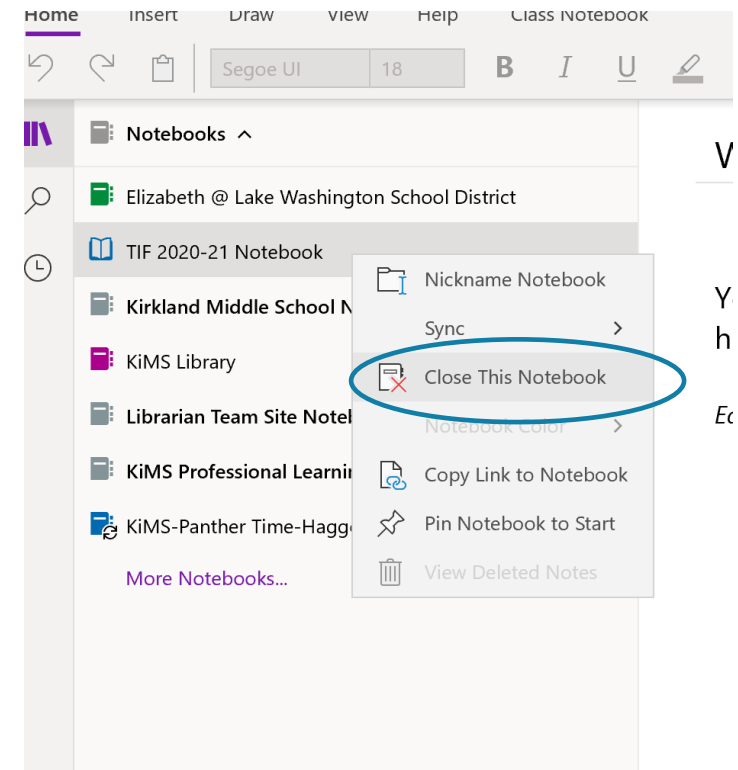
ONENOTE ISN'T SYNCING

- Right click on the notebook that isn't syncing.
- First try to manually sync.

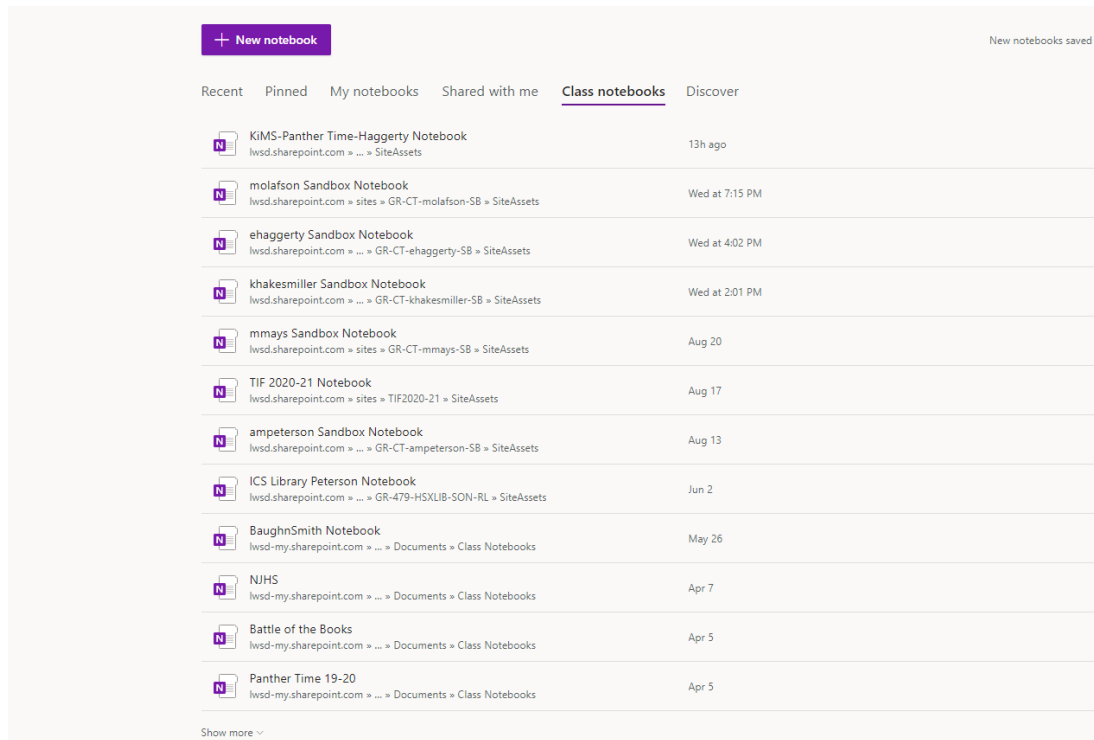


IF THAT DOESN'T WORK...

- Right click on the notebook.
- Choose Close Notebook.



GO ONLINE TO ONENOTE AND CHOOSE THAT SAME ONENOTE



- If you don't see it right away, click on Class Notebooks and scroll until you find it.
- Double click to open.

← → ↻ lwsd.sharepoint.com/sites/GR-Section_2021_365_288166-418706/_layouts/15/Doc.aspx?sourcedoc={32e1578c-da42-4f6b-b7cb-0d751eac311b}&action=edit&wd=target

Apps X-Ray Goggles Add to Babylist News, sport and op... Noodletools - Sign In Welcome to Mountl... LWSD Portal Spend Dynamics | L... Website Edit Pa

OneNote | PANTHER TIME [ZZZ057_17] (365) ▶ KiMS-Panther Time-Haggerty Notebook KiMS-Panther Time-Haggerty Notebook


File Home Insert Draw View Help Class Notebook Open in app Tell me what you want to do

↶ ↷ Segoe UI 18 B I U A Styles Tags abc

KiMS-Panther Time-Haggerty Notebook

Welcome	Welcome to Panther Time
> _Collaboration Space	FAQ: Class Notebook in Mi...
> _Content Library	
> _Teacher Only	
> ALLRED, JACK	
> AO, YINING	
> BARKANS, BRADLEY	
> BILGIN, EGE	
> BLAT-PHILLIPS, MAYA	
> BOYD, RYAN	
> CABLE, AMANDA	
> COOLEY, WILLIAM	
> GROVES, ALEXIS	
> HAGAN-EMMIN, ISLA	
> HUDSON, JACOB	
> KILBURN, GROVER	
> MAEDA, ISABELLA	
> MILLER, JAYDEN	
> NIMMER, JOSEPH	

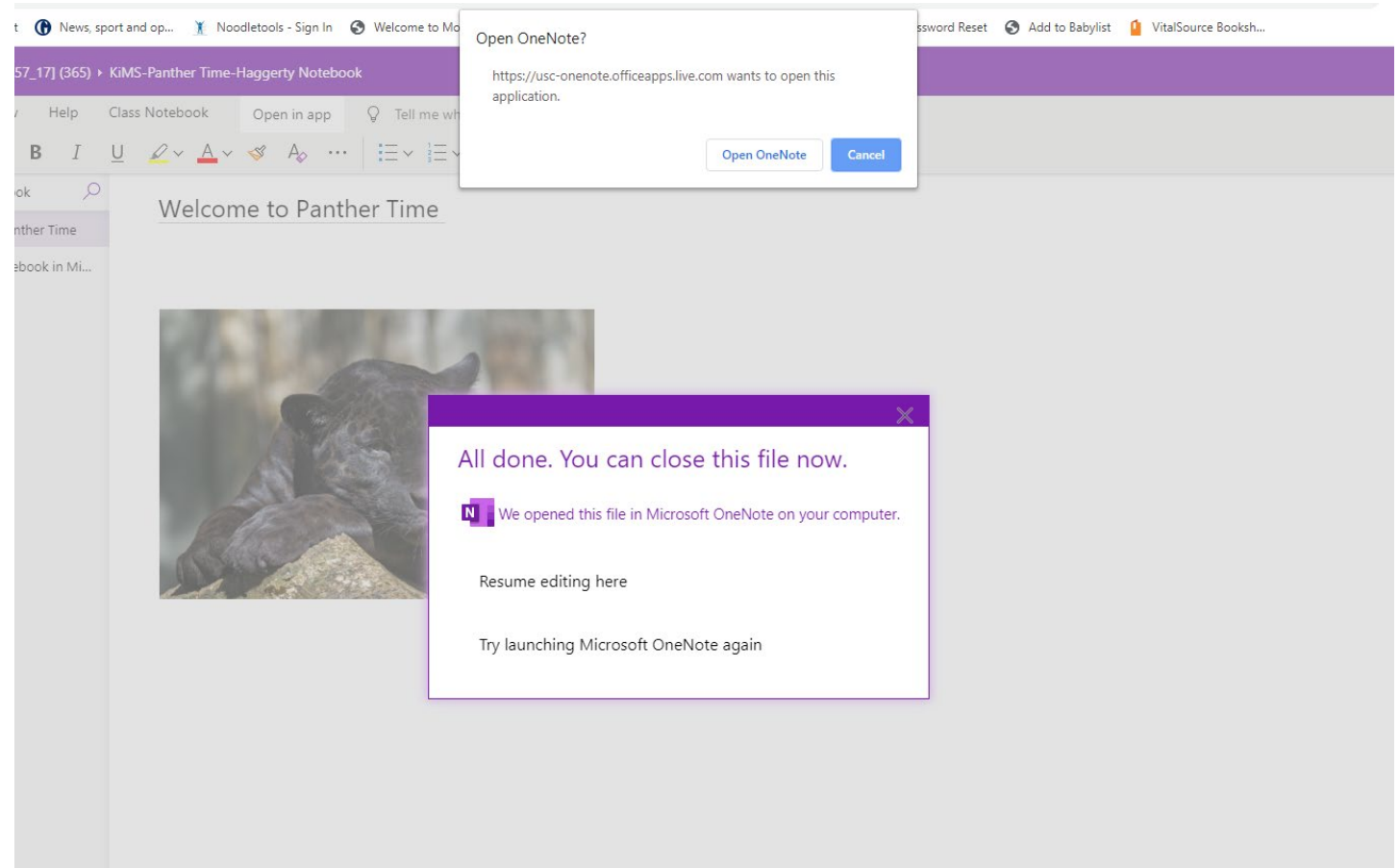
Welcome to Panther Time



CHOOSE OPEN
IN APP

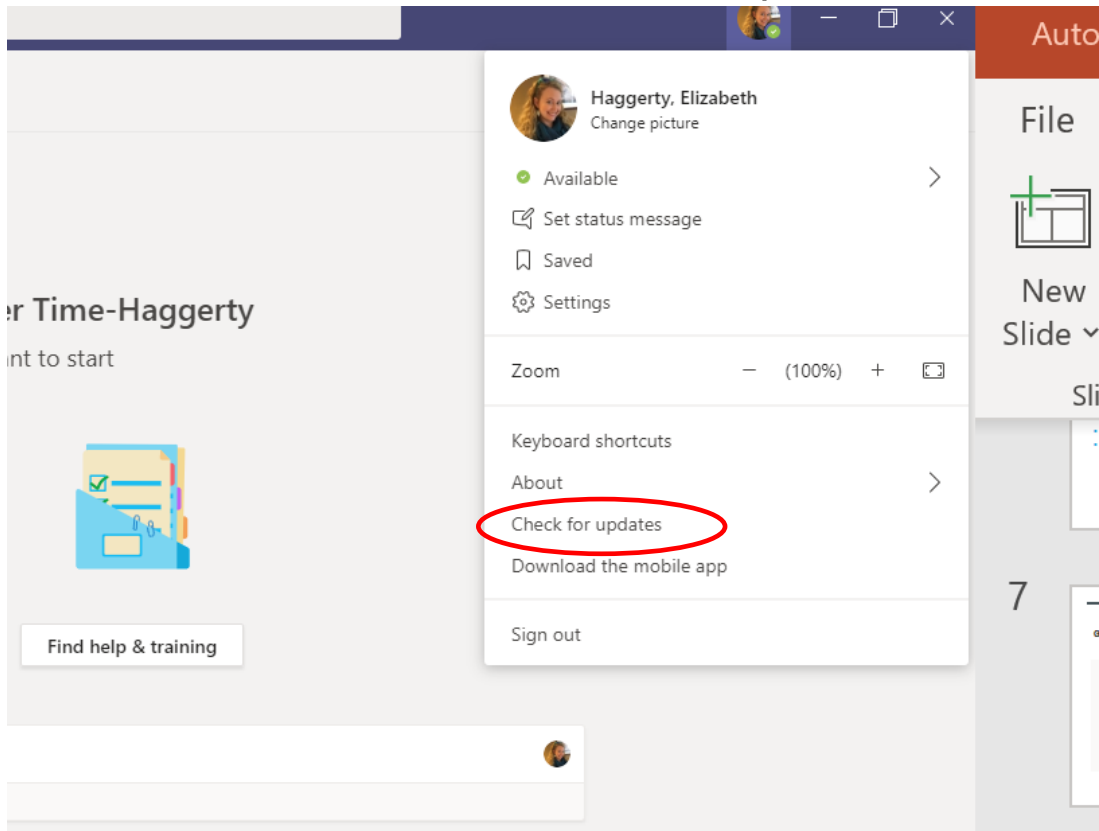
ONE SYNC ISSUES CONT.

- You will see this screen. Choose Open in OneNote.
- The Notebook will take a few minutes to load.

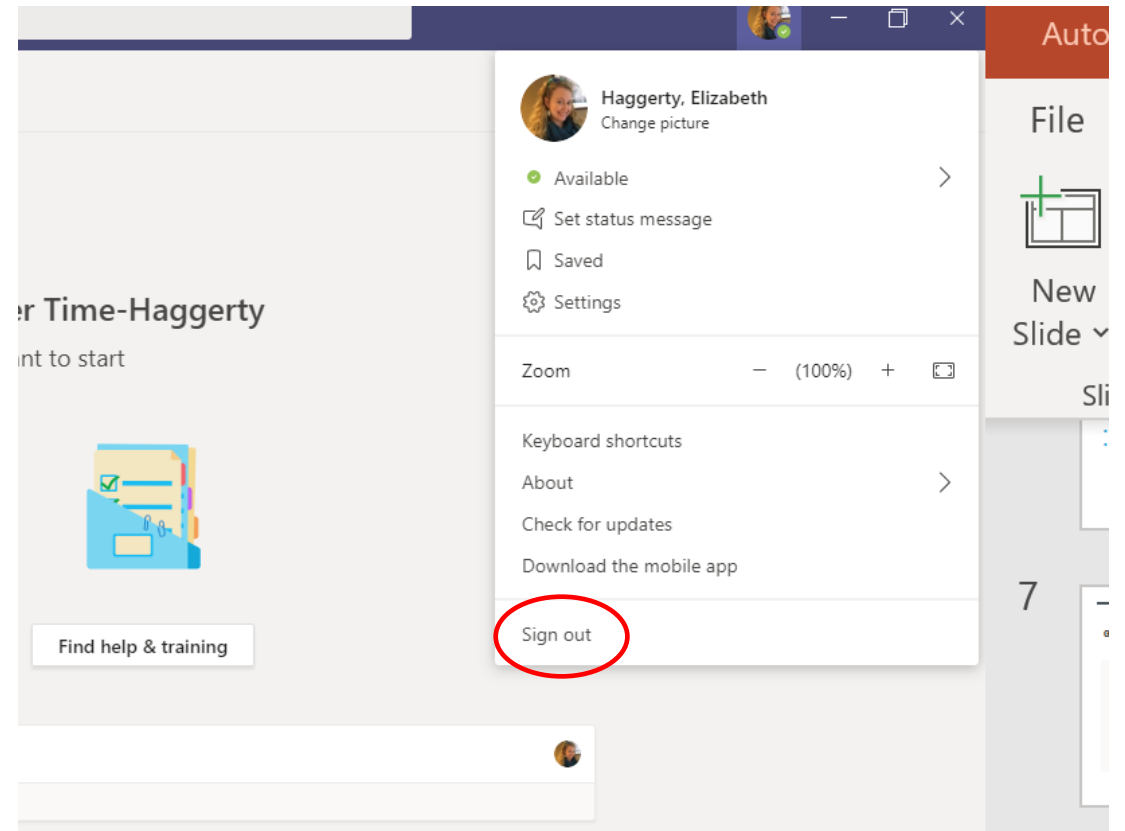


TEAMS IS HAVING ISSUES

One: Click on your picture in the upper right-hand corner. Choose Check for updates.

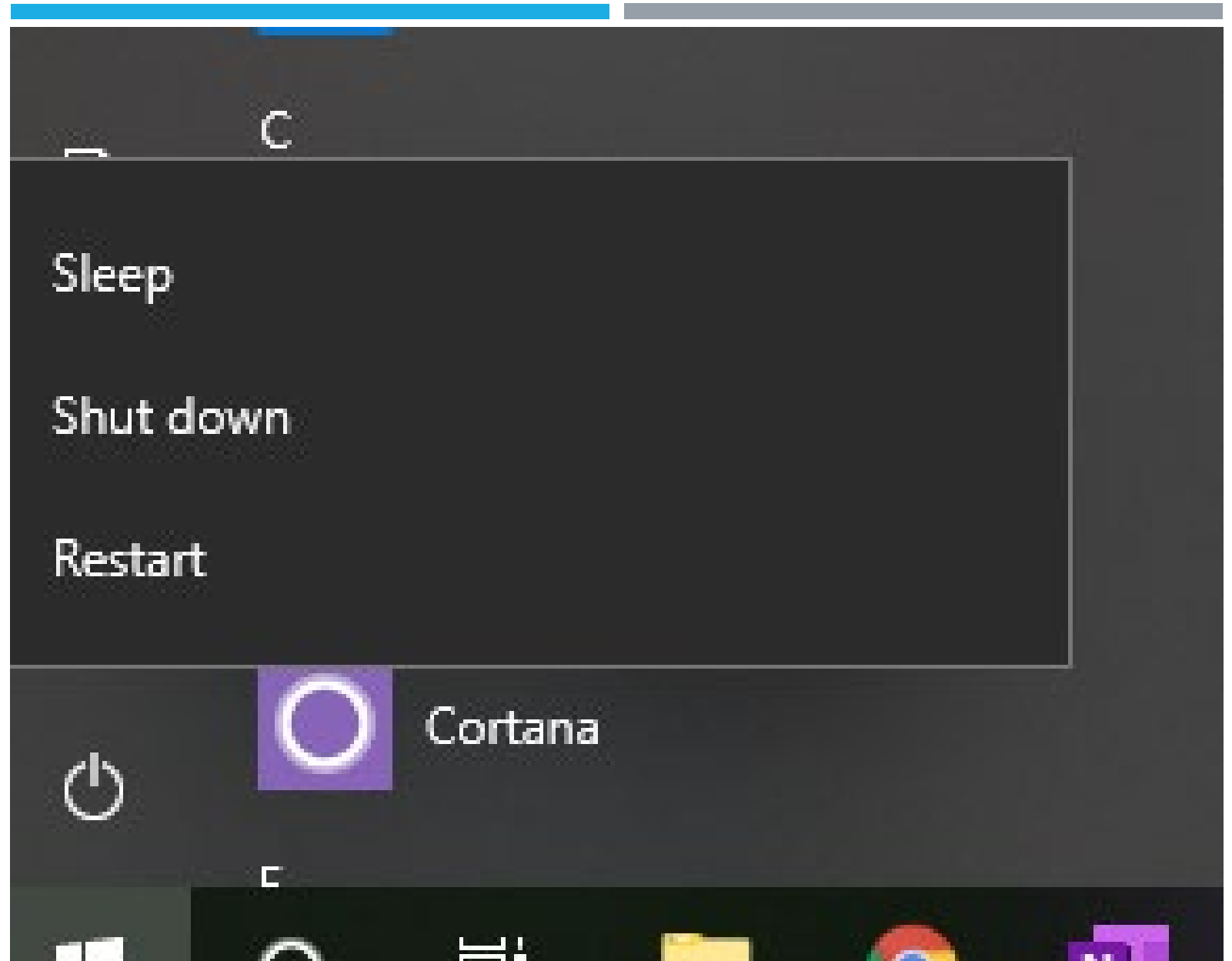


Second: Sign out of Teams. Wait 10 minutes. Sign Back in.



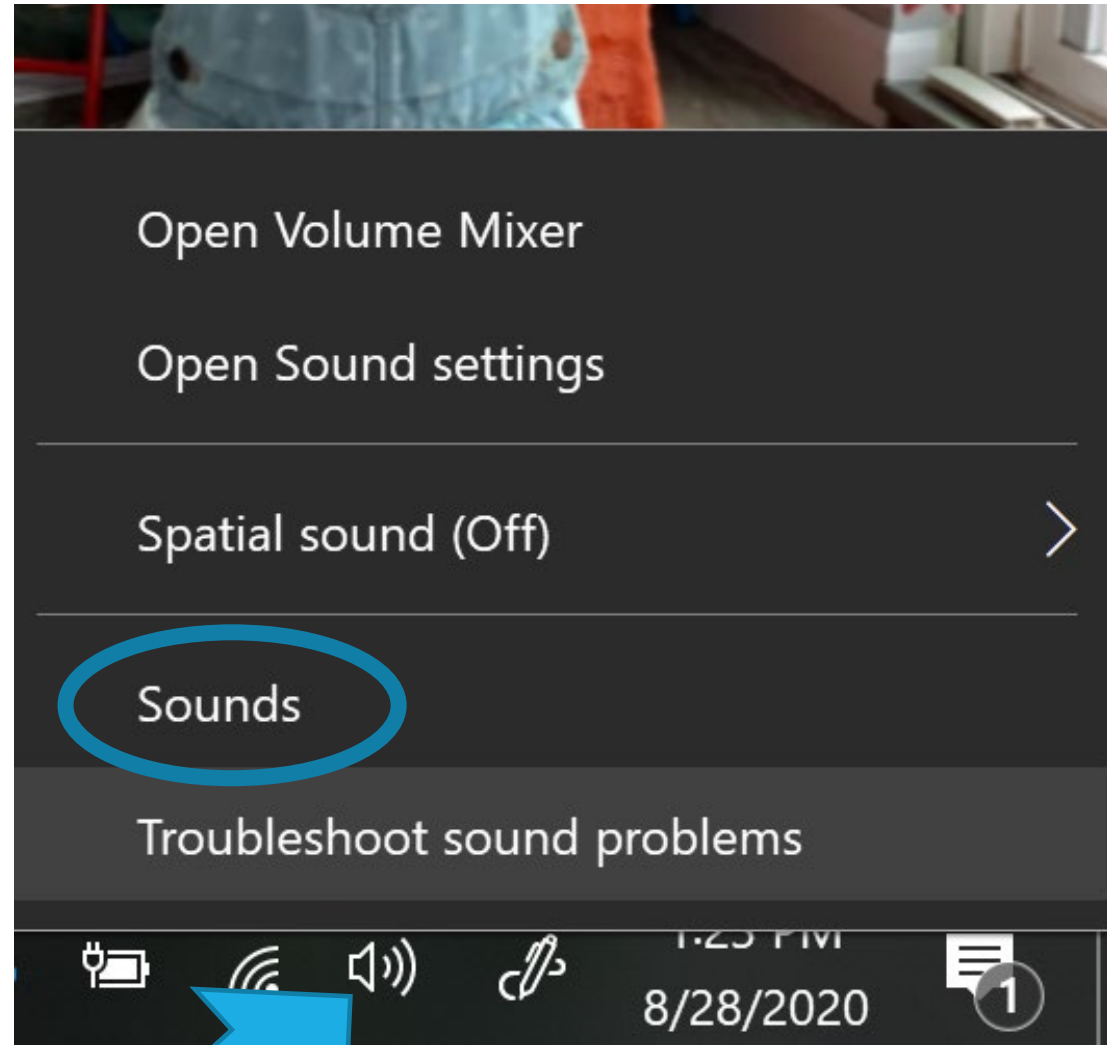
INTERNET NOT CONNECTING/UNABLE TO SEE WEBSITES

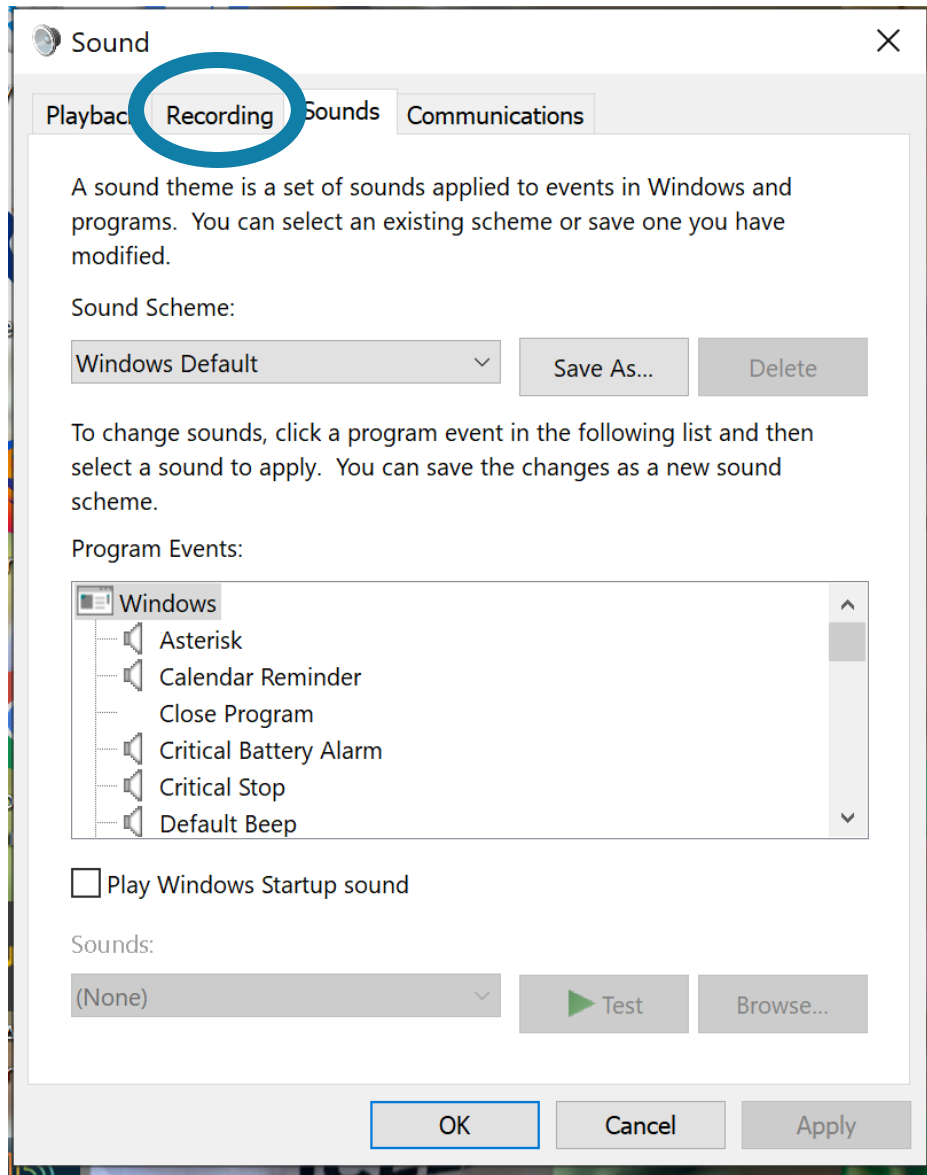
- Restart your computer twice back to back. Wait 10 minutes (set a timer) then log back in.



NO SOUND WHEN RECORDING

- Right click on the Sound Icon in the bottom right-hand corner of your screen.
- Choose Sounds



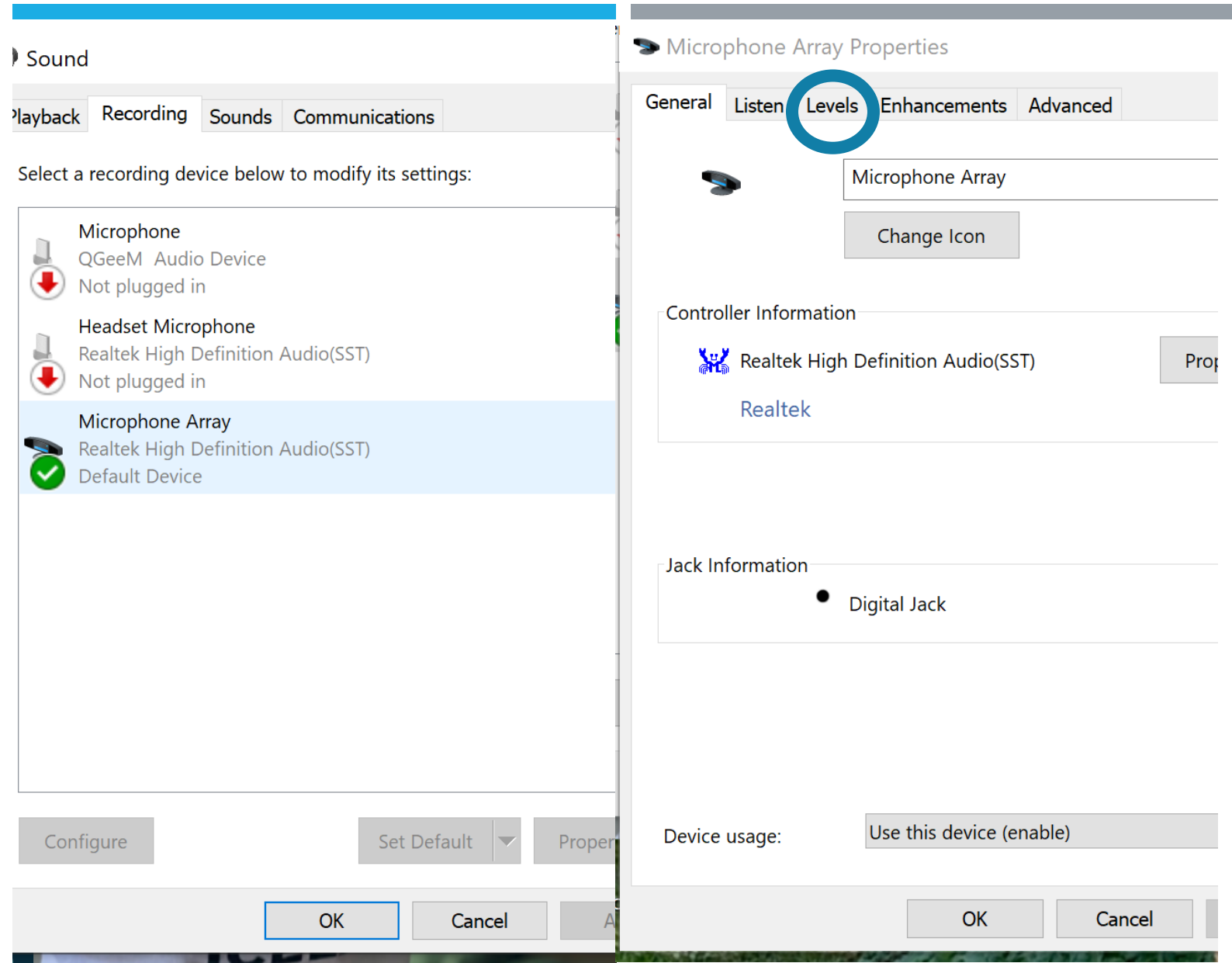


NO SOUND CONT.

THIS WINDOW WILL POP UP.
CHOOSE THE RECORDING
BUTTON AT THE TOP.

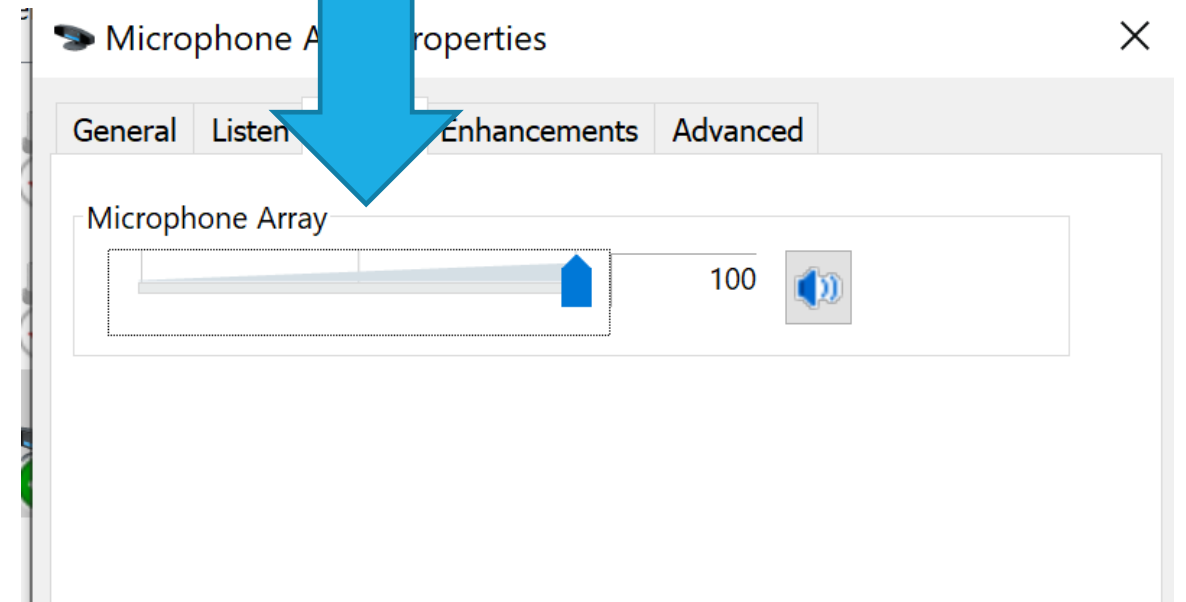
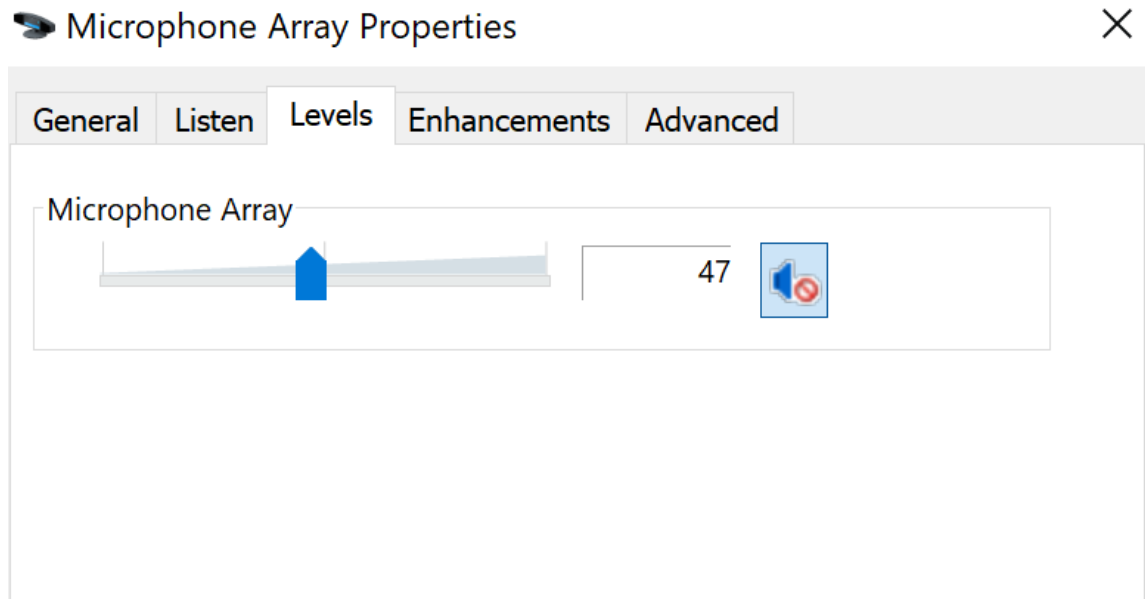
NO SOUND CONTINUED

- Double click on the Microphone with the check mark in the green circle.
- A new Window will pop up.
- On that window choose Levels



NO SOUND CONTINUED

- Click on the Sound icon if it has the red circle next to it.
- Turn the Level to One Hundred.
- It should look like this one.



SKYWARD

The logo graphic consists of a large dark blue rectangle. The word "Skyward" is written in white, sans-serif font on the left side of this rectangle. Below the dark blue rectangle is a light blue horizontal bar. The right end of this bar is cut off by a 3D rectangular block that extends downwards and to the right, creating a sense of depth.

Skyward



**NONE OF THE TIPS
ARE WORKING**

Families Contact:

Family Technology Access at

ftaccess@lwsd.org or 425-936-1322

7:00 a.m. – 7:00 p.m., 7 days/week.

24x7 Parent Help email

address: parentquestions@lwsd.org